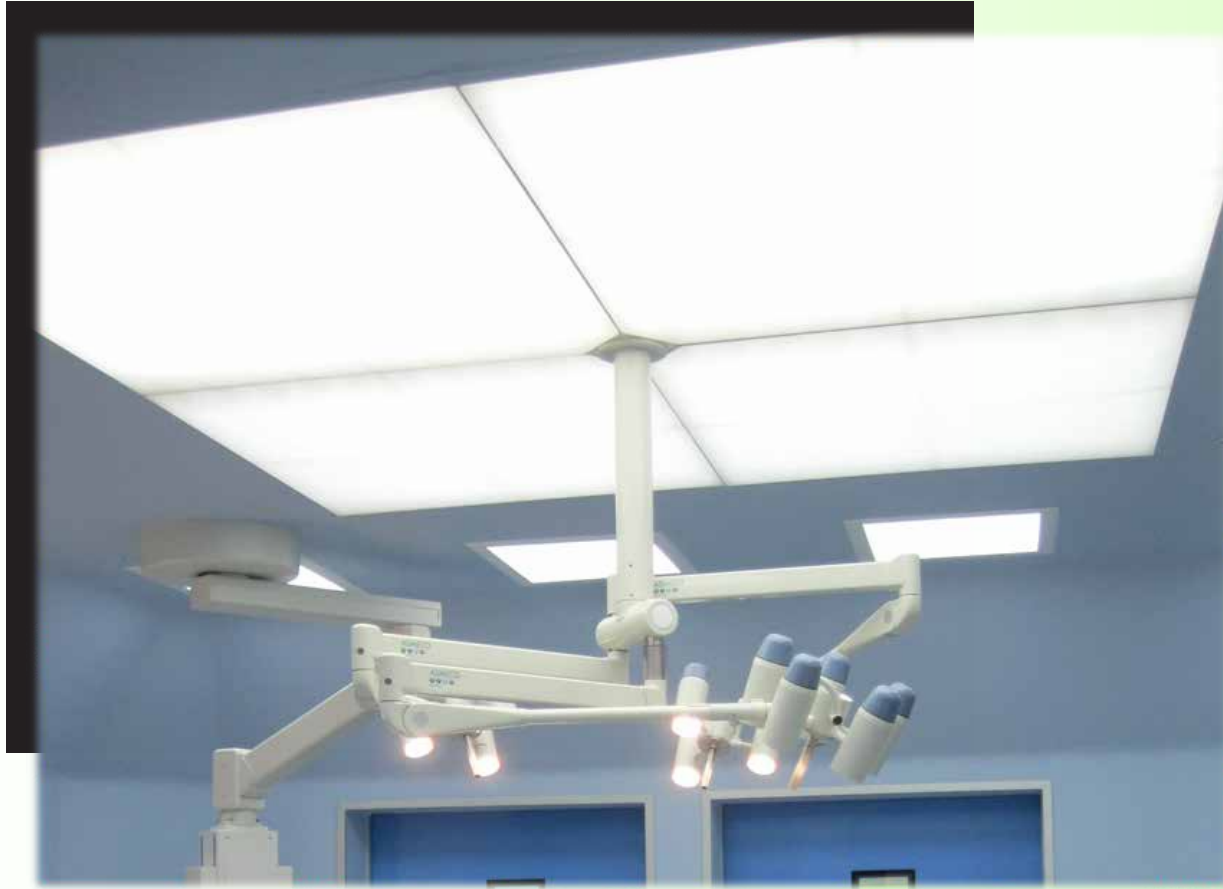


Laminar Flow Air Ceiling

The WTK Laminar Flow Air Ceiling is used in operating theatres for the supply of clean quality air with laminar flow characteristics. It is designed and built to suit most operation application maintaining a very high standards of hygienic control.



Model WT01011 to 18

WTK would ensure the operation procedures will not be affected by shimmering lights and shadows and dazzling eyes & supplied peripheral lighting system with sufficient illumination level at the operation site.

Description

WTK Laminar Flow Air Ceiling is constructed by using high quality stainless steel or powder coated electrolysed steel sheet. Various numbers of HEPA filters are used depending on the air flow requirement, thus substantially removing any chance of bacteria being introduced into the operation theatre.



Model WT01001 to 08



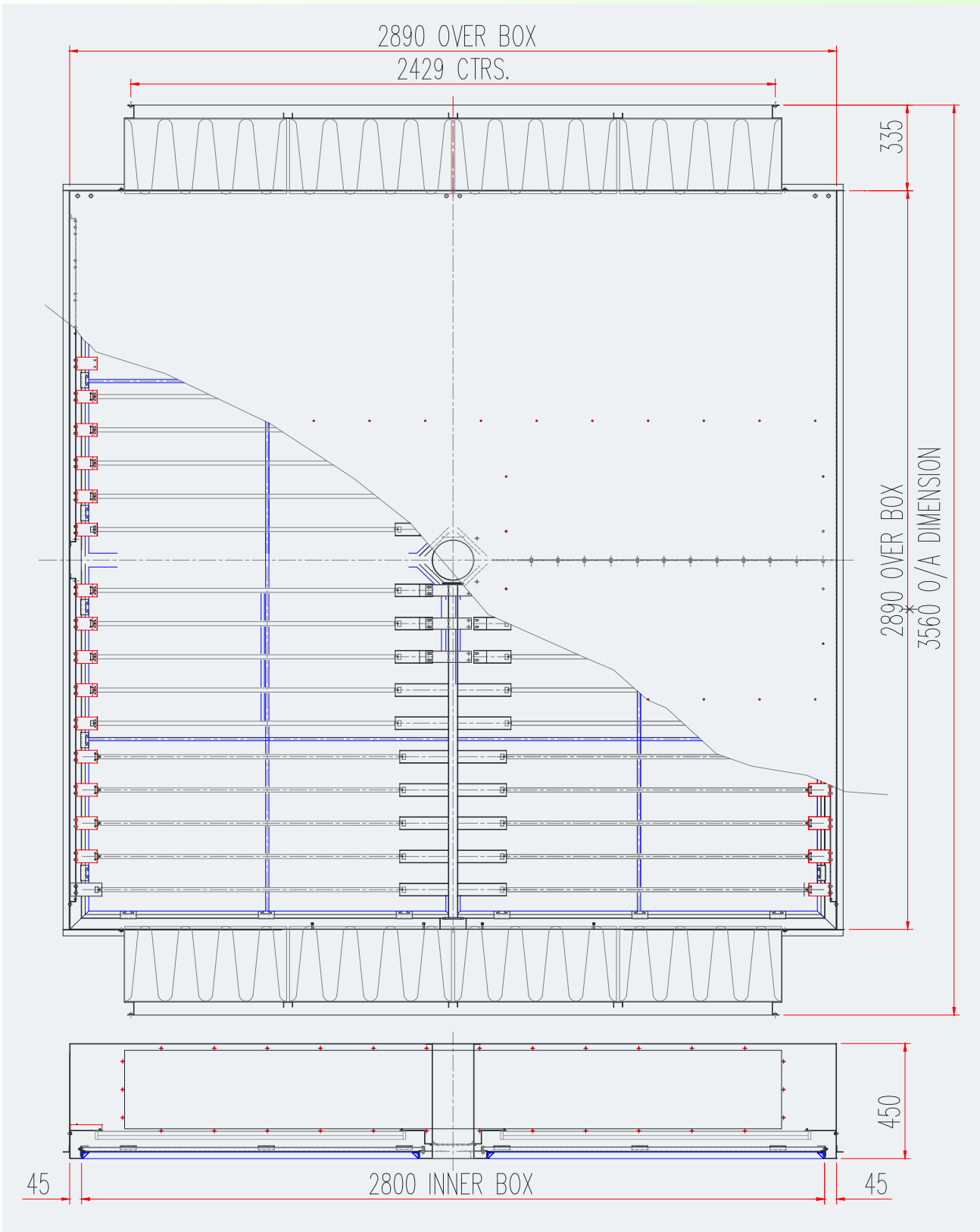
WTK Laminar Flow Air Ceiling is designed to be easily integrated with ceiling mounted ceiling suspension system such as OT lights and pendant system. Its lighting system also has a very low power consumption on and maintenance cost when compared with membrane diffuser system.

WTK Laminar Flow Air Ceilings have been designed to strictly comply with HTM 03-01 / HTM 2025 and DIN 4799 test requirements.

It is the key factor to ensuring that the patient has absolutely minimal chance of getting bacterial infection and at the same time maintaining sufficient air change required. This laminar flow removes all chance of back flow preventing bacteria from moving onto wound sites.

Innovative Design in Medical Engineering

TYPICAL LAYOUT OF 2.8X2.8M LAMINAR FLOW AIR/LIGHT CEILING



TECHNICAL SPECIFICATION

HTM 03 - 01/HTM2025 - Ventilation in Healthcare Premises

DIN 4799 - Testing of Air Distribution Systems Serving OT

HTM 2007 - Electrical Supply and Services Distribution

HTM 2020/2021 - Electrical Safety codes for High & Low Voltage

Dimension : Length* x Width* x 450mm Depth* (* vary)

Material : High grade stainless steel or electrolyzed steel sheet

Finishing : Satin polished stainless steel or epoxy powder coated steel

Integration : Air / Light system with diffuser membrane system

MODEL NUMBER

WT01001	1.8mx1.2m Laminar Flow Air Ceiling c/w HEPA filters
WT01002	1.8mx1.8m Laminar Flow Air Ceiling c/w HEPA filters
WT01003	2.4mx1.2m Laminar Flow Air Ceiling c/w HEPA filters
WT01004	2.4mx1.8m Laminar Flow Air Ceiling c/w HEPA filters
WT01005	2.4mx2.4m Laminar Flow Air Ceiling c/w HEPA filters
WT01006	2.8mx2.4m Laminar Flow Air Ceiling c/w HEPA filters
WT01007	2.8mx2.8m Laminar Flow Air Ceiling c/w HEPA filters
WT01008	3.0mx3.0m Laminar Flow Air Ceiling c/w HEPA filters

WT01011	1.8mx1.2m Laminar Flow Air/Light Ceiling c/w HEPA filters
WT01012	1.8mx1.8m Laminar Flow Air/Light Ceiling c/w HEPA filters
WT01013	2.4mx1.2m Laminar Flow Air/Light Ceiling c/w HEPA filters
WT01014	2.4mx1.8m Laminar Flow Air/Light Ceiling c/w HEPA filters
WT01015	2.4mx2.4m Laminar Flow Air/Light Ceiling c/w HEPA filters
WT01016	2.8mx2.4m Laminar Flow Air/Light Ceiling c/w HEPA filters
WT01017	2.8mx2.8m Laminar Flow Air/Light Ceiling c/w HEPA filters
WT01018	3.0mx3.0m Laminar Flow Air/Light Ceiling c/w HEPA filters